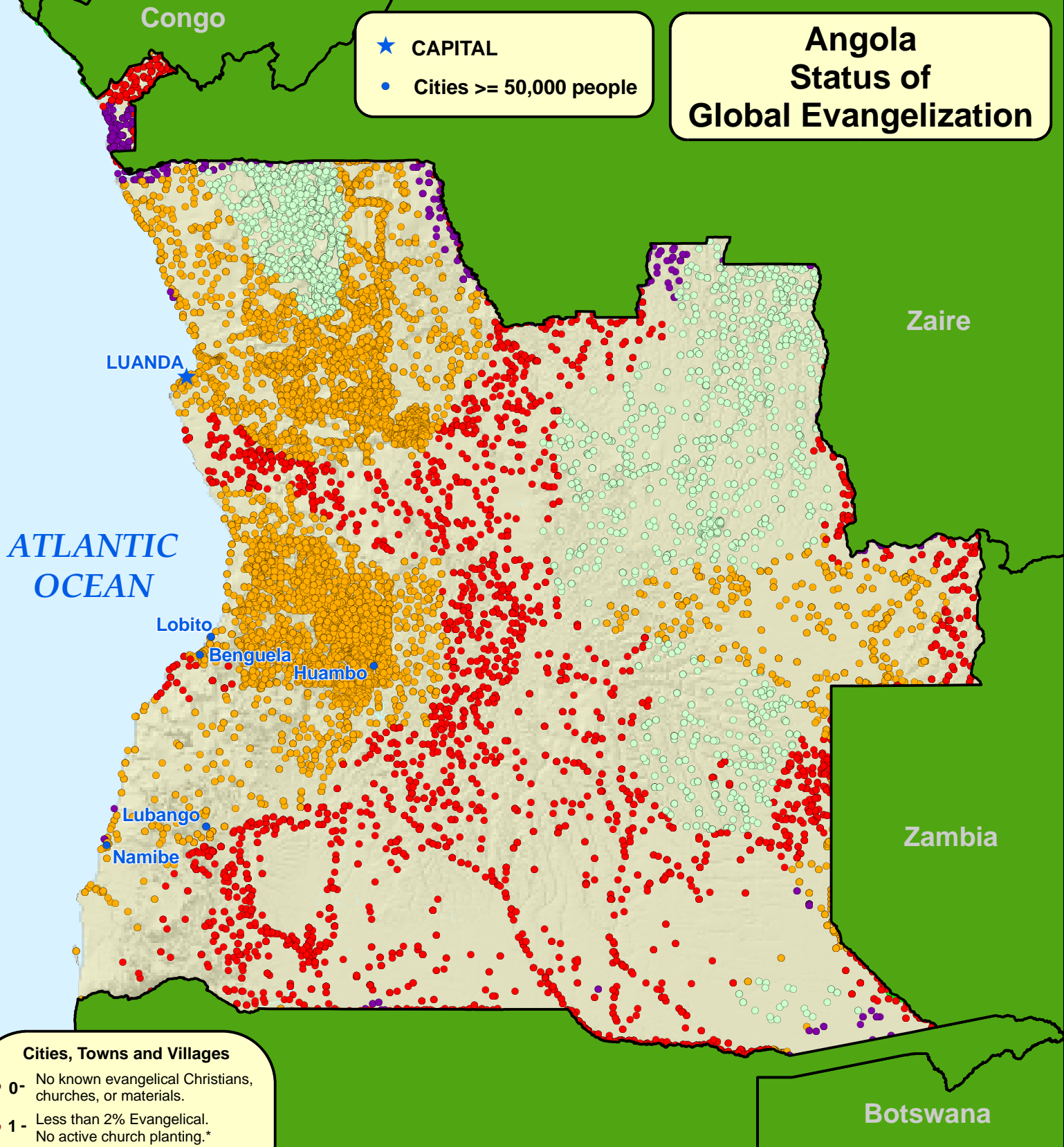


# Angola

## Status of Global Evangelization

- ★ CAPITAL
- Cities  $\geq$  50,000 people



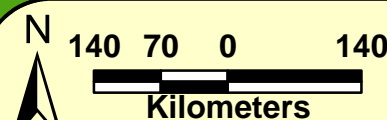
### Cities, Towns and Villages

- 0 - No known evangelical Christians, churches, or materials.
- 1 - Less than 2% Evangelical. No active church planting.\*
- 2 - Less than 2% Evangelical. Initial church planting.\*
- 3 - Less than 2% Evangelical. Widespread church planting.\*
- 4 - Greater than 2% Evangelical.
- 5 - Greater than 5% Evangelical.
- 6 - Greater than 10% Evangelical.
- 7 - Unknown

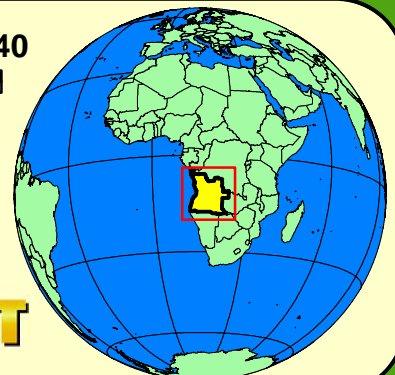
The status of each place is determined by the language associated with it.

\* church planting within the past 2 years

Source: [www.peoplegroups.org](http://www.peoplegroups.org)



10/05



[www.worldmap.org](http://www.worldmap.org)