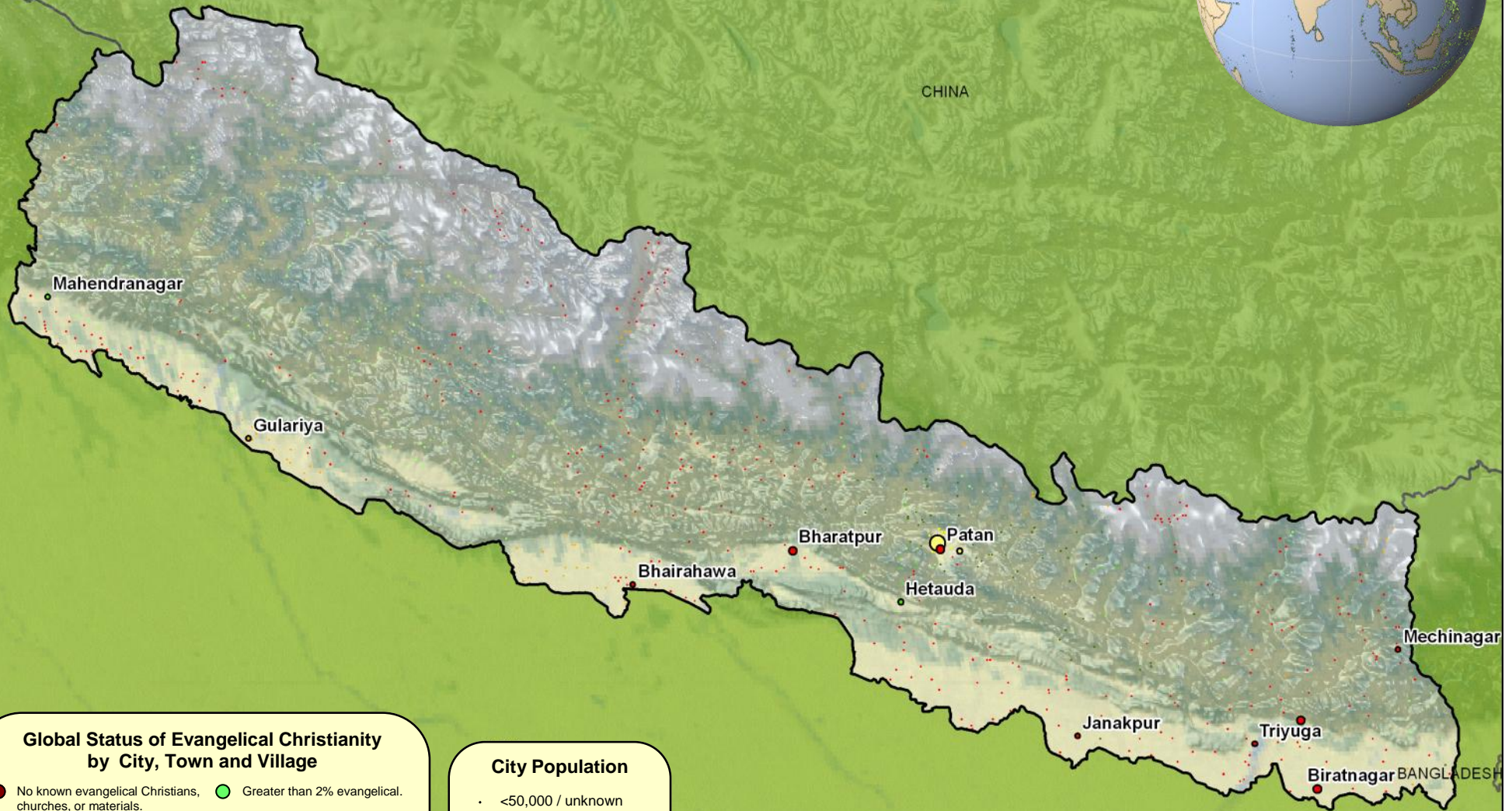


Nepal

Status of Evangelical Christianity

By City, Town and Village



Global Status of Evangelical Christianity by City, Town and Village

- | | |
|--|---------------------------------|
| ● No known evangelical Christians, churches, or materials. | ● Greater than 2% evangelical. |
| ● Less than 2% evangelical. No active church planting. | ● Greater than 5% evangelical. |
| ● Less than 2% evangelical. Initial church planting. | ● Greater than 10% evangelical. |
| ● Less than 2% evangelical. Widespread church planting. | ● Unknown |

The status of each location is determined by its predominate language and people group. *Church planting within the past 2 years.

Source: www.peoplegroups.org Updated 01/09

City Population

- <50,000 / unknown
- 50,000 - 99,999
- 100,000 - 499,999
- 500,000 - 999,999
- 1,000,000 - 4,999,999
- > 5,000,000

