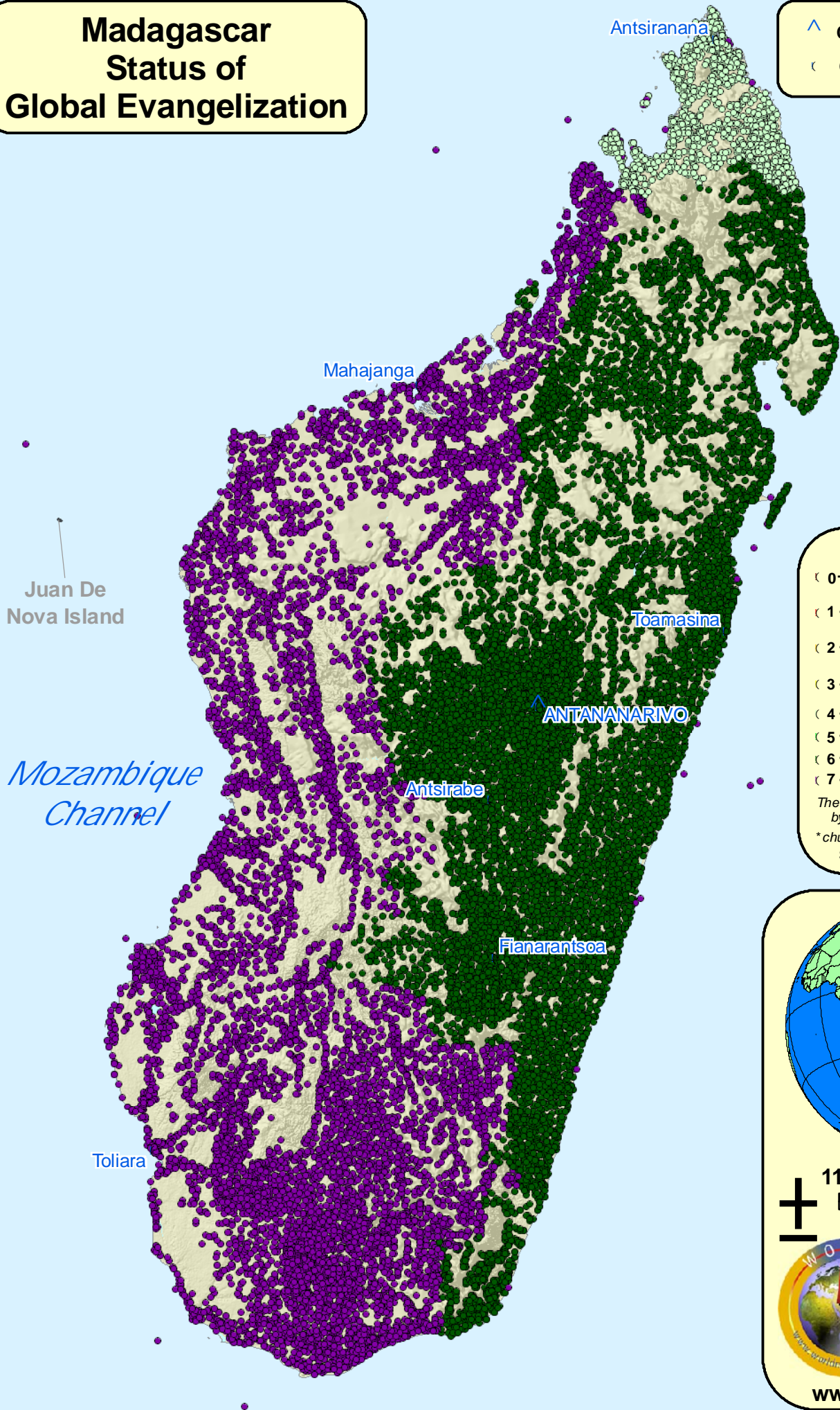


# Madagascar Status of Global Evangelization

^ CAPITAL  
 ( Cities >= 50,000 people



INDIAN OCEAN

**Cities, Towns and Villages**

- ( 0 - No known evangelical Christians, churches, or materials.
- ( 1 - Less than 2% Evangelical. No active church planting.\*
- ( 2 - Less than 2% Evangelical. Initial church planting.\*
- ( 3 - Less than 2% Evangelical. Widespread church planting.\*
- ( 4 - Greater than 2% Evangelical.
- ( 5 - Greater than 5% Evangelical.
- ( 6 - Greater than 10% Evangelical.
- ( 7 - Unknown

*The status of each place is determined by the language associated with it.*  
 \*church planting within the past 2 years  
 Source: www.peoplegroups.org

110 55 0 110  
 Kilometers

9/05  
**WORLD MISSIONS ATLAS PROJECT**  
 www.worldmap.org