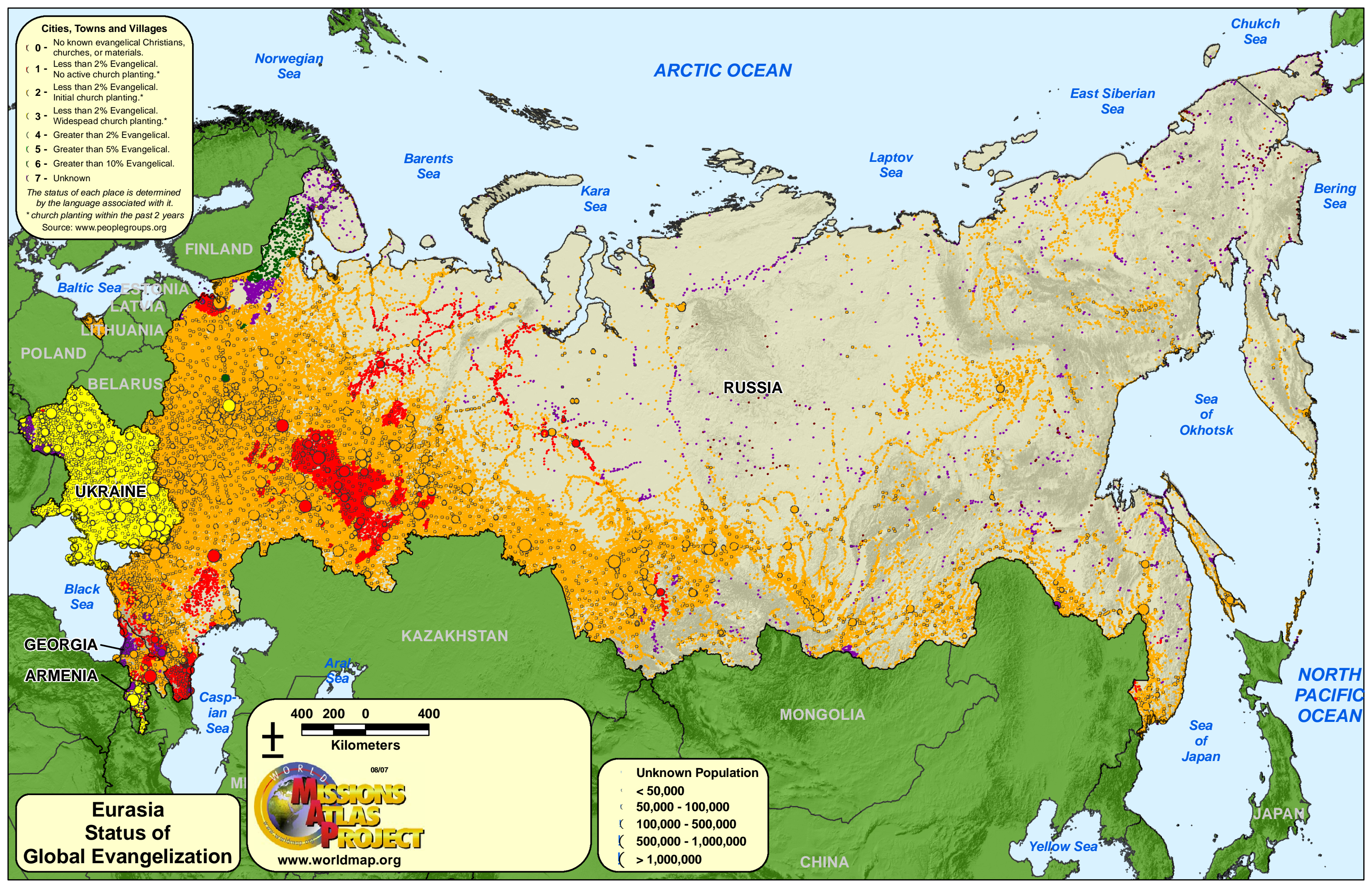


**Cities, Towns and Villages**

- ( 0 - No known evangelical Christians, churches, or materials.
- ( 1 - Less than 2% Evangelical. No active church planting.\*
- ( 2 - Less than 2% Evangelical. Initial church planting.\*
- ( 3 - Less than 2% Evangelical. Widespread church planting.\*
- ( 4 - Greater than 2% Evangelical.
- ( 5 - Greater than 5% Evangelical.
- ( 6 - Greater than 10% Evangelical.
- ( 7 - Unknown

The status of each place is determined by the language associated with it.  
 \* church planting within the past 2 years

Source: www.peoplegroups.org



FINLAND  
 ESTONIA  
 LATVIA  
 LITHUANIA  
 POLAND  
 BELARUS  
 UKRAINE  
 GEORGIA  
 ARMENIA

RUSSIA  
 KAZAKHSTAN  
 MONGOLIA  
 CHINA  
 JAPAN

400 200 0 400  
 Kilometers

08/07

**WORLD MISSIONS ATLAS PROJECT**

www.worldmap.org

Unknown Population

- ( < 50,000
- ( 50,000 - 100,000
- ( 100,000 - 500,000
- ( 500,000 - 1,000,000
- ( > 1,000,000

**Eurasia  
 Status of  
 Global Evangelization**