

Cities, Towns and Villages

- 0 - No known evangelical Christians, churches, or materials.
- 1 - Less than 2% Evangelical. No active church planting.*
- 2 - Less than 2% Evangelical. Initial church planting.*
- 3 - Less than 2% Evangelical. Widespread church planting.*
- 4 - Greater than 2% Evangelical.
- 5 - Greater than 5% Evangelical.
- 6 - Greater than 10% Evangelical.
- 7 - Unknown

The status of each place is determined by the language associated with it.

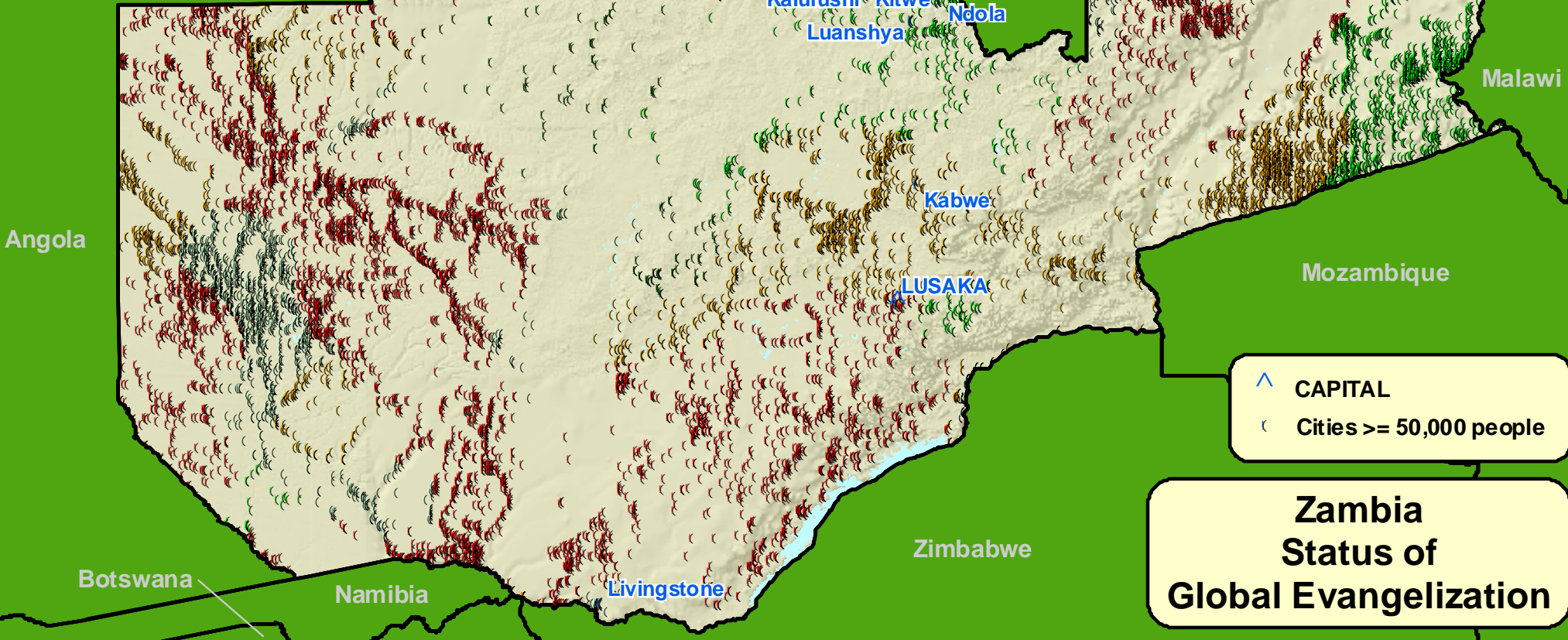
** church planting within the past 2 years*

Source: www.peoplegroups.org



Kilometers

7/05



- ^ CAPITAL
- ◁ Cities >= 50,000 people

**Zambia
Status of
Global Evangelization**